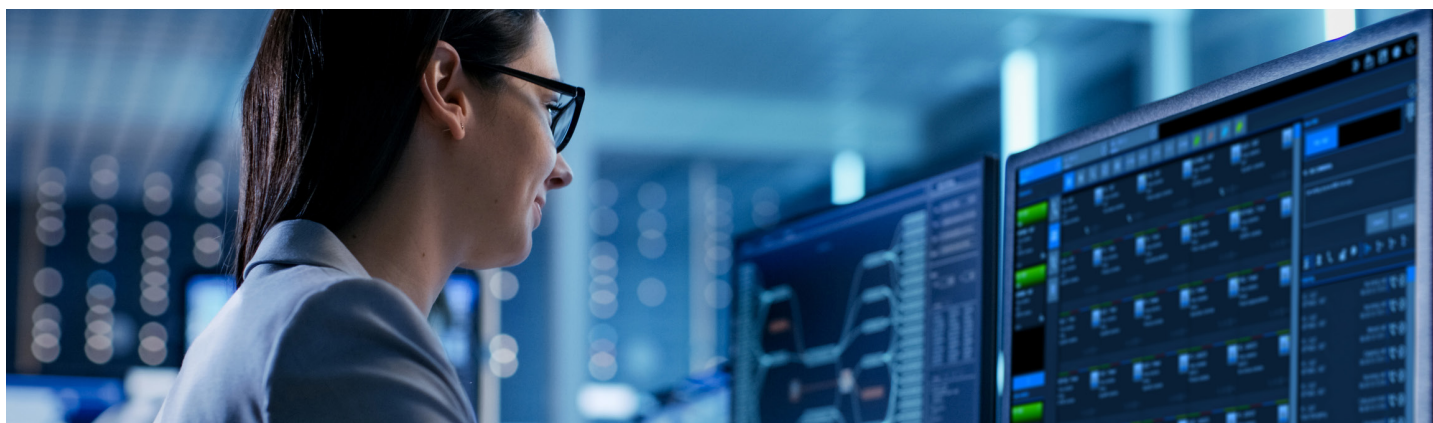


# GSM-R Dispatcher



Multi-Network Dispatching System tailored for Railway operation.  
Managing railway communications - easy and effective

Modern railway organizations need to ensure efficient management of their fleet and their operational and maintenance staff. This task can only be accomplished with railway communication control centres equipped with state-of-the-art GSM-R dispatchers.

## Product Overview

GSM-R Dispatcher is a multi-network dispatching system tailored for the need of railway operators and at the same time a feature rich solution fully compliant to EIRENE and MORANE standards. GSM-R Dispatcher helps to efficiently manage the communication between control centres, stations and field staff, such as train drivers, track workers and shunters.

## Multi-Network Connectivity

As specified in EIRENE standards, GSM-R Dispatcher supports both E1 (ISDN PRI) and IP (SIP-R) interfaces to connect to the GSM-R core network for voice communication. As the GSM-R Dispatcher is multi-network capable, it offers interconnection to several other networks such as LTE, PSTN, TETRA, PBX, and analog radio networks. Uniform operation and transparent conferencing across those networks enhances the communication capabilities in daily operation.

## Future Proof Investment

GSM-R Dispatcher offers high protection of investment, where smooth migration towards LTE and FRMCS is assured with a pure software solution and COTS hardware.

## Off-the-Shelf Hardware

GSM-R Dispatcher is designed to run on commercial off-the-shelf (COTS) hardware, which has several advantages: It is cost-effective, proven in compliance with related international and national standards and it is backed up by providers service network. It provides independence for future system expansions and eliminates any vendor dependency.

## Reliability and Robustness

The usage of standard IT systems makes the design and operation of the central servers and distributed clients robust, self-healing and promotes flexibility, scalability and easy maintenance.

## Graphical User Interface

The Graphical user interface is natively touch based. It is designed for an intuitive operation, without menus and dialog windows. However, the interface is designed for both touch and conventional operation.

## Flexible Role Management

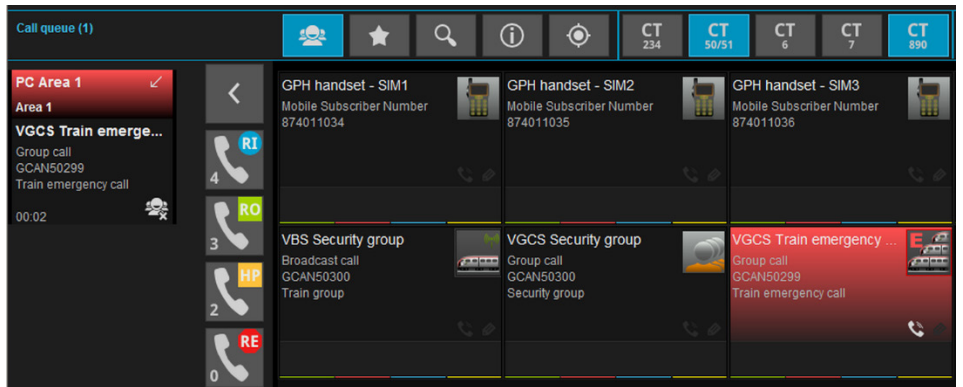
The administration system enables a very efficient role management, It is built specifically for distributed controller positions in the railway environment, to smoothly support the roles concept according existing operational scenarios. Controllers can operate in shared roles during peak hours, but also one controller can handle multiple roles during off-peak times.

## Key Features

- Multi-network dispatcher tailored to fit railway operation and standards
- Using state-of-the-art technology and based on COTS IT hardware
- High reliability and flexibility in deployment
- Supported of virtualization
- Full-IP architecture, no need for TDM lines
- Flexible role management supporting operating scenarios
- EIRENE certified and feature-rich
- Direct and intuitive user interface
- Central data storage enabling free seating
- Configurable and customizable

## Telephony Functions

- Call queueing – sorted with direct access
- Multi-network calls and conferencing
- Display of calling/connected party (CLIP/COLP)
- Call forwarding and Call transfer
- Call waiting and Call hold
- Global and personal phonebook
- Dial pad and call wizard
- Direct access keys
- Detailed call history with call-back function



## EIRENE Functions

- Functional numbering
- Group calls and broadcast calls
- Railway emergency calls
- Public emergency calls
- Multi-level priority and pre-emption
- Location Dependent Addressing
- SMS messaging
- Alerting Controller
- Driver Safety Device Alarm

## Enhanced Functions

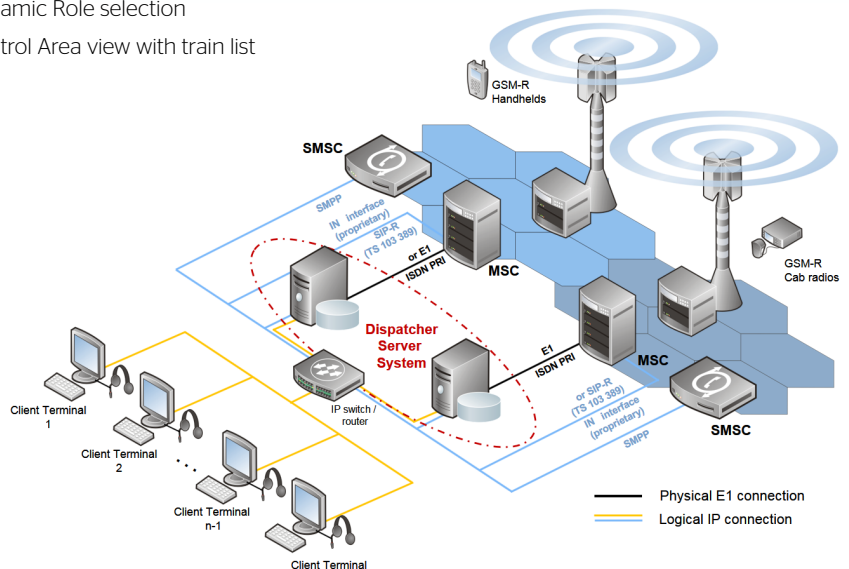
- Dynamic train list with detailed train location
- SMS sending to functional number
- SMS text templates and history
- Background-call handling
- Event logging – calls, alarms, SMS
- Local voice recording of controller calls
- Configurable automatic call answering
- Phone book and favourites lists
- Dynamic role management
- Role- / user-specific environment
- Predefined multi-network conferences
- Call loop detection and elimination

## Terminal Functions

- Different types of terminals in single deployment based on customer preferences (from 10 up to 20")
- Access control and roles management
- Multiple voice channels for calls
- Configurable audio devices
- Emergency calls highlighting
- Mnemonic number presentation
- Phonebook with Smart Filtering
- Configurable direct access keys
- Interactive notification bar – instant information about missed calls, new SMS, alerts and alarms
- Action enabled event log
- Dynamic language selection
- Dynamic Role selection
- Control Area view with train list

## Future Proof Architecture

- Redundant and full-IP based solution, TDM not needed
- Virtualization platforms supported
- Automatic update of terminal software
- Centralized administration of users, roles, phonebook without operation interruption
- Central storage of all data – free seating



For more information: [+40 268 409 400](tel:+40268409400) / [info-cc@atos.net](mailto:info-cc@atos.net) / [atos.net/convergence-creators](http://atos.net/convergence-creators)